



WEIDEMANN

designed for work



**Economic efficiency, safety
and comfort come standard.**

The all-rounder from Weidemann.



The multifunctional Hoftracs®.
Compact design, small turning radius and powerful performance.
Our innovation: the fully electric 1160 eHoftrac®.

from page 10

Hoftrac®



The powerful wheel and tele wheel loaders.
Convincing lift performances and sturdy kinematics.
Available with a load arm and telescopic arm.

from page 16

Wheel loader and tele wheel loader



The compact telehandler.
Tremendous lift heights and excellent stability with a high machine utilisation and all-wheel steering.

from page 22

Telehandler



WEIDEMANN

designed for work

Weidemann – a tradition of efficiency.

For decades, our mission has been to lighten the load of commercial agriculture by the mechanisation of stable and yard operations. This led to the design and development of the Hoftrac®, which has become a generic term for its own equipment category – the original comes from Weidemann. The close co-operation between the Weidemann developers and our end users has repeatedly led to innovative concepts and a sophisticated product programme with high usability and mature technology.

We stand by this and continue to pursue our chosen path. Our customers benefit from high productivity, investment security and have a strong partner in Weidemann, who is always on their side. Our machines and services perform at a high level and bring daily pleasure through their work operation. Made precisely for this. Weidemann – designed for work.



Weidemann – your strong partner.

All-round care.



International network of dealers.

Weidemann has a wide selection of choice dealers worldwide. Each dealer is part of a well-organised system. In addition to consulting and selling new machines, our dealers are happy to provide you with reliable customer service and supply you with spare parts. Weidemann offers regular training for dealers so that your contact partners are always up to date.

Attractive financing programme.

In Germany, Weidemann offers attractive options for financing or leasing machines thanks to various framework agreements. Weidemann distributors also offer various financing options at the international level. Get in touch with your local contact partner to find out about current conditions.



Personal training and instruction.

When the machine is handed over, you and your entire team will receive detailed instructions on the operation and maintenance of the machine. If you would like to know more, simply contact your dealer. He or she is just around the corner and will be happy to help without bureaucracy.

Warranty extension.

Upon request, you can extend the warranty period of your machine up to 60 months or 5,000 operating hours.

Our history.

Innovation born of tradition.

The beginnings of the formation of the Weidemann machine factory consisted of a farm, two brothers and a shared interest in technology. In addition to agriculture, they both soon built a second industrial foothold. In 1960, Maschinenfabrik Weidemann KG (limited partnership) was then founded, which started the production of machines and components. The first major milestone followed 12 years later when the Hoftrac® was invented, which is a small articulated wheel loader that was often able to replace the time-consuming manual work on the farm.

In the following decades, the company grew rapidly. Today, Weidemann products are synonymous with compact Hoftracs®, wheel loaders and tele wheel loaders in the agriculture and the equine industry, forestry and wood industries, municipalities, nurseries, biogas plants as well as various areas in industry and commercial enterprises.

1960

Company foundation
Weidemann Maschinenfabrik KG is founded in Diemselsee-Flechtdorf.



1974

Start series production
The first Hoftrac® produced in mass production is the model "Perfekt 130", which already has articulated steering at the time.



1980

The 02 series
The first series of models with optimised service accessibility is produced.



1992

Hoftrac® with a completely enclosed cab
A completely enclosed cabin is also available for smaller Hoftrac® models. The application range of Weidemann machines has thus been expanded considerably.



1998

Plant expansion I
Construction of additional industrial buildings on the plant premises in Flechtdorf.



2005

CX series
The entire product range receives a redesign, production start of the CX series.



Takeover

Weidemann GmbH is taken over by the former Wacker Construction Equipment AG. Start of production of yellow wheel loaders for the construction industry.



2009

Telehandler T4512
At Agritechnica 2009, the compact telehandler T4512 is presented and a new machine category is born: the so-called "compact telehandler".



2011

vis (Vertical Lift System)
At Agritechnica 2011, the innovative driver assistance system vis is presented.



2014

1160 eHoftrac®
Original Hoftrac. 100% electric. Thanks to the innovative 1160 eHoftrac®, emissions are a thing of the past.



2017

100,000 machines are produced
Another milestone in the company's history: the 100,000th machine is produced and handed over to the customer.



1972

The Hoftrac® is invented
At the time still as a 3-wheel construction in a simple design as a tractor trailer.



1978

New construction of plant II
On the outskirts of Flechtdorf, new business premises with various production buildings are created on 40,000 m².



1984

The 900 series
A best-seller series of models, which is produced for a total of 13 years.



1995

25,000 machines are produced
Since the invention of the Hoftrac® in 1972, 25,000 machines have already been produced.



2004

Plant expansion II
New construction of the administration building in Flechtdorf.



2007

New construction of a production plant
In the industrial park of Korbach, work is begun in the new production plant.



Wacker Neuson Group
Neuson Kramer Baumaschinen AG and Wacker Construction Equipment AG, to which Weidemann has belonged since 2005, merge to become Wacker Neuson SE (Wacker Neuson Group).



2010

50 years of Weidemann
Weidemann is celebrating its 50th anniversary in an extensive anniversary week with various events.



eps (Easy Protection System)
With just a few grips, the fold-down operator's canopy is prepared for a low height of passage.



2012

40-year anniversary of Hoftrac®
Weidemann has been successfully manufacturing various Hoftrac® models for 40 years.



2016

A tradition of efficiency
The brand values are defined and the "designed for work" claim is presented.





Our quality promise.

Weidemann offers true German-made quality.

At Weidemann, quality is not an empty promise. A true Weidemann comes from one of the most modern wheel and telehandler production facilities in Europe. The plant in Korbach guarantees a consistently high quality of our products. At Weidemann, quality begins early on because compliance with defined processes is taken seriously. Purchased parts supplied to production are continually monitored, tested, and optimised in co-operation with suppliers.

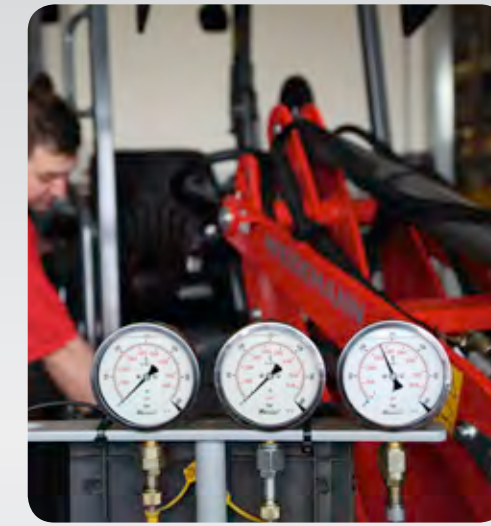
Powder-coating.

The powder-coating is another key feature of the special quality standard at Weidemann. This guarantees optimum protection against corrosion. In comparison to conventional wet painting, it greatly extends the service life of the machine. It is also more efficient and environmentally friendly.



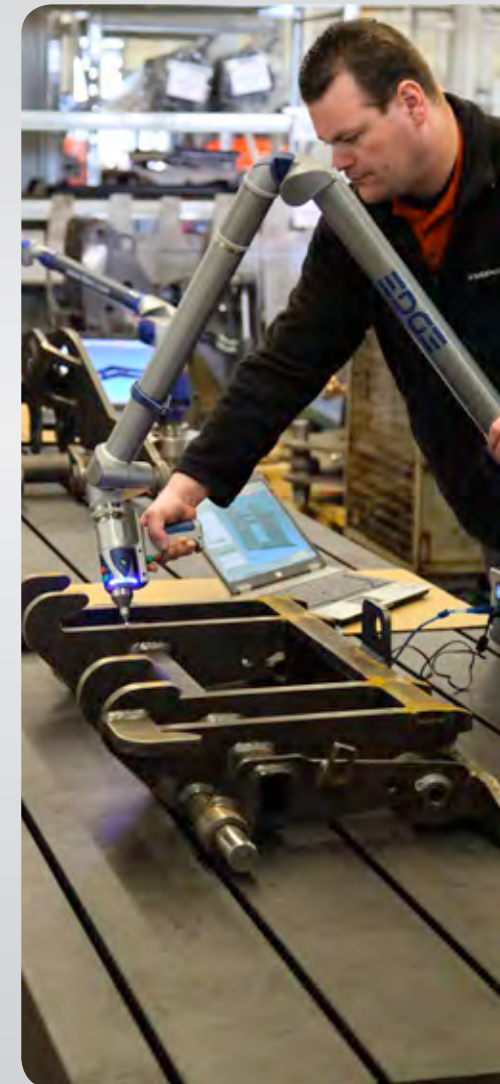
Careful final inspection.

Every Weidemann that leaves our factory is subjected to a careful final inspection. This guarantees our customers a long service life and low operating costs from the onset. The Weidemann label means quality.



DIN EN ISO 9001.

This standard is recognised internationally. With a certified system in accordance with international standard ISO 9001, Weidemann ensures that a focus on quality is reflected in all thoughts and actions within the company and that customers receive machines of certified quality.



Compact and manoeuvrable Hoftracs®.

Tailored-to-suit outfitting and powerful performance.

Flexible to choose cabs.

Serviceability with the laterally tiltable driver's cab.

Efficient tool change.

Excellent corrosion protection due to the powder-coating.

Compact and sturdy design.

High level of manoeuvrability and off-road capability due to the articulated pendulum joint.

Contact your local Weidemann distributor to find out what machines are available in your country.



1140 Basic Line

1140

1160

1160 eHoftrac®
More information on page 28.

124OLP

1260

1280

1350CC

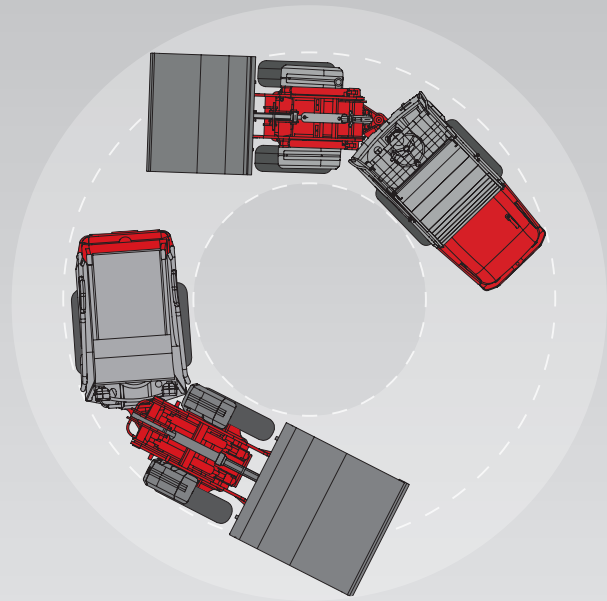
1380

1880

Your personal Hoftrac®.

Individual configuration options.

Compact design, low centre of gravity, tight turning radius and powerful performance – these features characterised the Hoftrac® series and still determine the success of our machines. Our basic models offer you the starting basis for a tailored-to-suit outfitting of your machine. With the lower priced entry models, you receive the ability to freely configure your machine: choose from among the



Compact machines with a high level of manoeuvrability. Especially when things become tight, e.g. work in stables and storage areas, our Hoftracs® feature small radius and optimum manoeuvrability.



Secure operator's canopy with restraint system. Maximum safety that is state of the art. As a standard, Weidemann installs an operator's canopy with a restraint system on all Hoftrac® models. The operator's canopy and the restraint system for the operator meet the current European machinery directive (2006/42/EC) for ROPS and FOPS protection. Depending on the model, a front and rear window are optionally available in order to protect the operator from the weather.

numerous options the ones that you need for your application. In this way, you can be sure that your machine completely meets your individual needs. And the best thing about the Hoftrac® concept: with our series, you only pay for what you really need.



The backbone of the Weidemann design: The legendary articulated pendulum joint. Weidemann Hoftracs® always run with all four wheels on the ground, in any situation, in any ground conditions. And because the front and rear carriage can oscillate independently of each other, they react sensitively to every unevenness. The benefits: you always drive with maximum traction and no power is wasted.



Comfortable cabin. The spacious cabin meets the current European machine directive (2006/42/EC) according to ROPS and FOPS protection and offers a great deal of headroom and freedom of movement. Due to the complete glazing, the operator has an outstanding overview of the attachment and the entire working area.



Adjustable steering column. Thanks to the adjustable steering column, you can adjust the driver's cab to your physical dimensions. By adjusting the various operator's controls, you can create a completely ergonomic working area.



Connectible 100% differential lock. The connectable 100% differential lock provides maximum traction and pushing power if necessary. It also keeps the tyre wear low (switched off during normal operation). This increases the efficiency of your machine!

Tremendous lifting and shearing forces due to the large-dimensioned hydraulic cylinders. On all Hoftracs®, Weidemann always includes two strong lift cylinders. This ensures that the load distribution is always optimally changed over to the load arm. In addition, the entire loader unit gains stability. The size of the hydraulic cylinder is always adapted to the size of the respective machine. This is gentle on both machine and material.

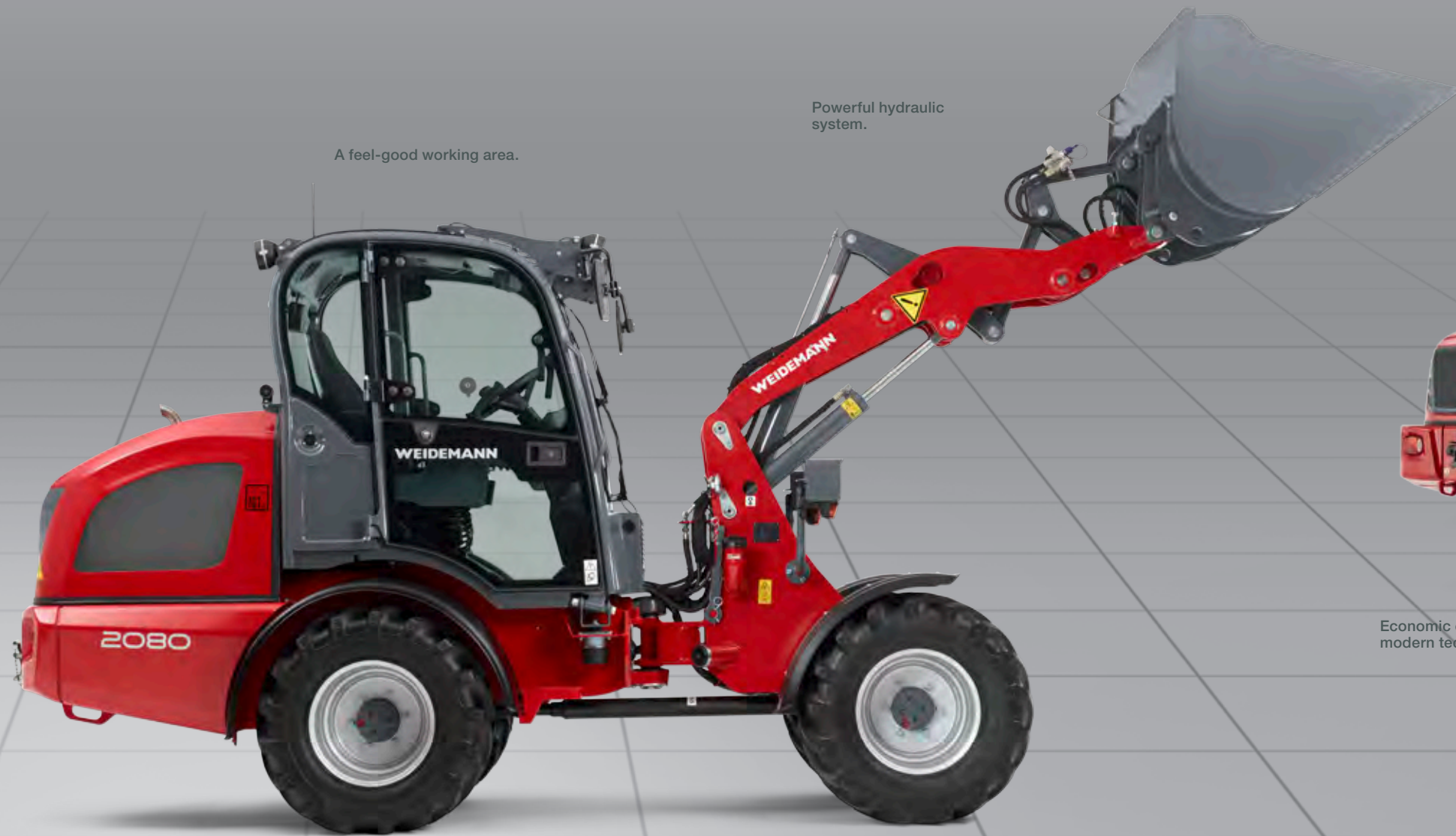


Weidemann Hoftracs®.
High performance in daily application.



Wheel loader – optionally available with load arm or telescopic arm.

Impressive lifting capacity and modern engine technology.



A feel-good working area.

Powerful hydraulic system.

A high degree of serviceability with the laterally tiltable cab.



The powder coating provides excellent corrosion resistance.

Economic efficiency through modern technology.

Road capability with articulated pendulum joint.

Contact your local Weidemann distributor to find out what machines are available in your country.



An essential part of your business.

Economic efficiency that's worth it.

The Weidemann wheel loaders and tele wheel loaders make every work operation even more productive. In addition to a high level of functionality, working comfort and excellent safety standards, they have a great deal of strength and endurance. Weidemann offers you this environmentally sound series with engine technology that always meets the latest emission standards.



Only at Weidemann:

Laterally tiltable cab.

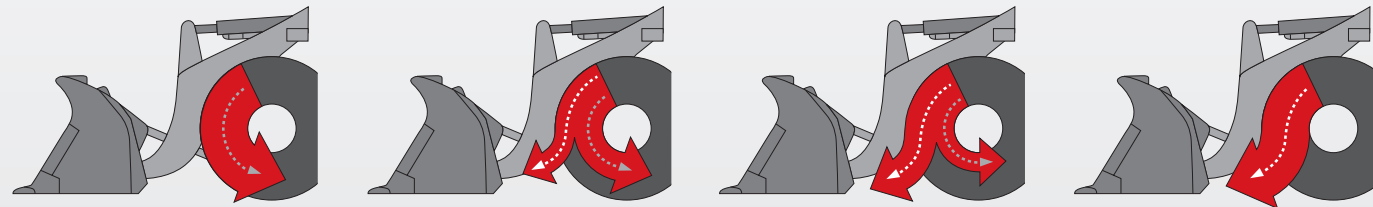
The models of the wheel loader and tele wheel loader series are equipped with a tiltable cab. This allows easy access to the engine, hydraulic system, and electronics. This facilitates maintenance of the machine. The engine bonnet can be opened widely, thereby allowing for optimal access.

Wheel loaders and tele wheel loaders.

The Weidemann machines of the 2080 through 5080 series are equipped with a cab (standard). The spacious cabs feature considerable freedom of movement. It also fulfils the current European Machine Directive (2006/42/EC) on ROPS and FOPS protection. Thanks to the complete glazing, the operator has an excellent overview of the attachments and the entire working area.

The Weidemann LP models.

At Weidemann, LP stands for "Low Position". Thanks to the lower driver's cab and seat position, the machine has a lower overall height. It can readily travel through narrow passages. It also allows the operator easy entry and shifts the centre of gravity towards the ground. The Weidemann LP models come standard with an operator's canopy, which meets the current European machine directive (2006/42/EC) for ROPS and FOPS protection. You can choose from various versions of the operator's canopy and cab. The LP construction is not available for the 5080 or 5080T.



The brake-inch pedal

In Weidemann machines, the hydrostatic all-wheel drive is combined with the brake pedal. Through the inching, this enables creeping until standstill. With the brake-inch pedal, it is possible to travel at millimetre precision in crawler gear at full engine speed while quickly lifting. If the pedal is

pushed further, the machine will stop. The advantage of the brake-inch pedal is the optimal distribution of the engine output. In addition, it is not possible to stall the machine.



The Weidemann diagnosis and analysis system.

Hot on the trail for errors with wedias.

The new engine technology involves new systems for maintenance and analysis. The sometimes drawn-out search for hidden errors belongs to the past. Thanks to the Weidemann diagnostic and analytical system, wedias, which has been incorporated into new machine types 2080 through 5080, many features such as the driving function, telescoping function, the 3rd and 4th control circuits, and the electrical functions can be quickly and unambiguously evaluated. Error messages in the display immediately notify the operator of possible errors and make a rapid response possible.

Engine technology

Since 1990, there have been specific exhaust emission standards in Europe for non-road and mobile working machines. The five-part staged plan provides for a gradual reduction of engine emissions for the various performance classes. In Europe, the steps to reduce emissions are referred to as stages or levels (I, II, IIIA, IIIB, IV and V). In the US, they are referred to as tiers (1, 2, 3, 4 interim, 4 final, and 5). Every level has a maximum permissible limit for the pollutants. Weidemann machines always comply with the valid exhaust emission standard of the respective performance range. However, because we would like to adapt our machines to the new legal situation and continue to develop our machines, we always put a great deal of developmental work and know-how into the new machine types.



Thanks to the exact designation of the error number, the dealer can come to the machine prepared and with the right spare parts. The subsequent error analysis by trained dealers simplifies further diagnosis and troubleshooting. This saves time, money and nerves. The system availability may vary by country. You can find additional information at your local Weidemann distributor.



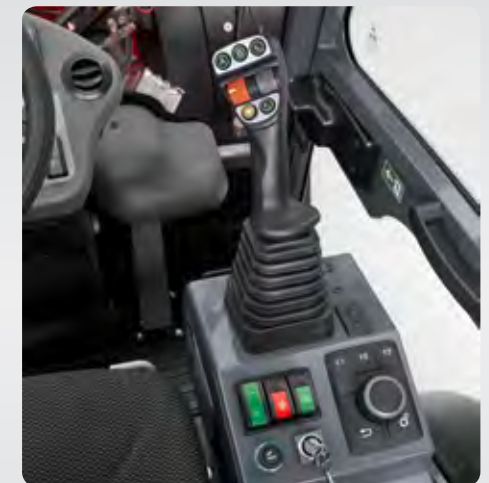
Comfortable working environment.

The working environment is excellent, thanks to an efficiently working heating and ventilation system with a fan, fresh air filter and well-placed air nozzles. For particularly hot outdoor temperatures, we recommend the air-conditioning system option.



Good all-round visibility.

The glazed cabin provides an excellent overview of the attachments, the immediate working area, and the entire machine surroundings.



Ergonomic joystick and jog dial control element.

Perfect control of the machine and functions via a joystick of the latest generation. The innovative joystick with ergonomically arranged, illuminated touch controls creates user friendliness and multi-functionality. If necessary, the "jog dial" control element can be used to manually set the flow rate of the hydraulic oil. This is advantageous if the machine is operating a hydraulic attachment that does not require the full hydraulic performance of the machine. The operator can therefore work precisely and in a resource-saving manner with a machine and attachment.

Weidemann wheel loader.

Performance cannot be any more convincing.



The compact telehandler.

Aim high with optimal stability.



Ergonomic working area and good all-round visibility.

Undivided chassis and all-wheel steering, low centre of gravity, and excellent stability.

Ideal ratio of lift height, width, and machine performance.

Compact design with tremendous lift height.



Innovative driver assist system vis (Vertical Lift System).

Optionally 3 steering types for efficient operation of the machine.

Contact your local Weidemann distributor to find out what machines are available in your country.



T4108



T4512



T5522



T6027

Your indispensable all-rounder.

Work safely and efficiently.

The compact Weidemann telehandlers are unique in the combination of lift height, width and machine capacity. With the 4 wheel drive and all-wheel steering, you are absolutely stable and well equipped for many different tasks. Those who drive a Weidemann telehandler simply will no longer give it up.



Optimum ease of servicing.

The engine bonnet can be opened upward with just one handle for regular service and maintenance work. The hydraulic oil tank, air filter, engine oil filling, oil-level dipstick and coolant are therefore easily and quickly accessible – real added comfort.

Compact dimensions in the 2 x 2 metre class.

Telehandlers from Weidemann are built extremely compactly. The width and height of all machines are each below 2 meters. This is why our telehandlers are also ideal for application in confined areas and therefore are unique in their combination of lift height, width and machine capacity.

Three types of steering for maximum flexibility.



All-wheel steering

Full manoeuvrability and power development in the smallest area.

Front wheel steering

For safe driving, even at higher speeds.

Crab steering (optional)

Sideways driving for ultra-precise manoeuvring in tight spaces, such as for shift work on walls.



Machines with a high level of manoeuvrability.

All telehandlers of our line of products have particularly small inner radii. Especially when things become tight, e.g. work in stables or storage areas, our telehandlers feature small radius and optimum manoeuvrability. All-rounder for any application location.



Ergonomic working area.

More spaciousness in a cab that was designed and developed according to the latest findings in safety technology and ergonomics. Plenty of legroom, clearly arranged instrument clusters, a comfortable operator's seat and an optimal visibility of the attachment. A working area that motivates and fully supports the operator.



Driver assistance system vls (Vertical Lift System).

The VLS (Vertical Lift System) makes a fluid working principle possible and, through a partially-automated telescoping movement, supports the work in a complex operating environment. Due to the nearly vertical lifting or lowering movement, the stability of the machine is improved. The VLS has been time-tested and proven and our innovation has received multiple international awards. More on page 29.

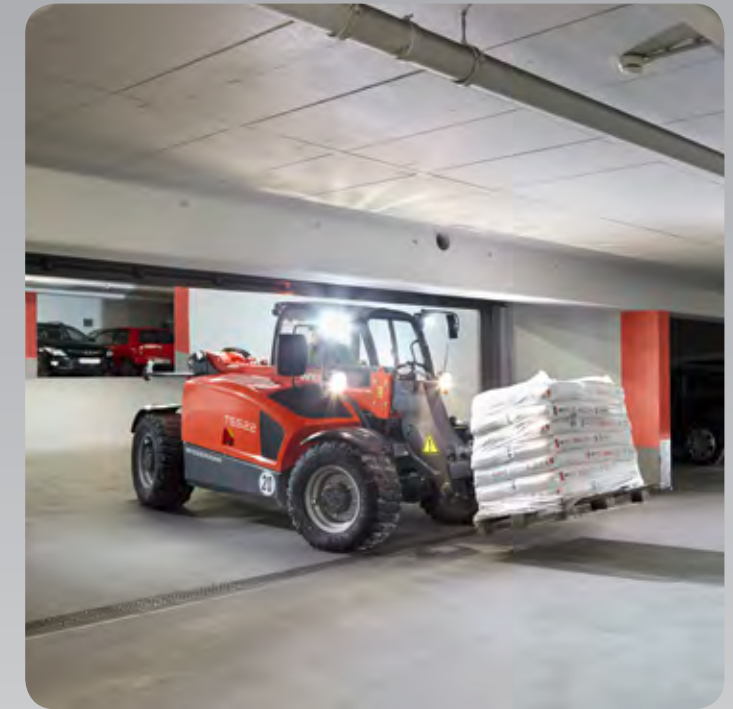
Undivided chassis, all-wheel steering, low centre of gravity and excellent stability.

Thanks to the all-wheel steering and the undivided frame, Weidemann telehandlers are particularly manoeuvrable and very stable. The low centre of gravity of the machine also supports the stability.



Weidemann telehandler.

Versatility that convinces.



Innovation born of tradition.

Always a step ahead with Weidemann.



eHoftrac®

1160 eHoftrac®.
Original Hoftrac®. 100 % electric.

CO₂-exhaust fumes, noise and soot particles in buildings – that was yesterday! The 1160 eHoftrac® banishes emissions from your everyday work. It combines familiar usage properties and the time-tested and proven performance of our Hoftrac® with the latest technology and an environmentally-conscious and cost-efficient electric drive system.

100 % electric: technology that excites. A lead-acid battery drives the eHoftrac® to peak performances – and only requires an electrical connection with 230 volts to do so. Two separate electric motors are used in the machine: one for the drive and one for the traction drive of the work hydraulics. This minimises the power consumption, because the performance is only drawn when it is really needed. The electric motor for the drive also allows a dynamic and powerful start-up of the machine. This can be felt in every acceleration process.

An AGM (Absorbent Glass Mat) battery is built into the 1160 eHoftrac®. The AGM technology describes a design of a closed, maintenance-free lead-acid battery with an internal gas recombination, which results in a number of advantages:

- Improved degree of efficiency and better power output with the same capacity
- Leak-proof system thanks to the enclosed battery cells
- No longer necessary to top off the distilled water
- On-board battery charger, charging at any normal outlet with 230 V
- Interim charges increase the battery's efficiency
- More safety during the charging process (75% reduced gas formation)
- Increased recuperation capacity (energy recovery)
- Low temperature sensitivity (outdoor temperature)
- Hardly any thermal development in operation



The 1160 eHoftrac® has received multiple international awards:

Eima
innovation award 2014
Italy



Agra
innovation award 2015
Bulgaria



Equitana
innovation award 2015
Germany



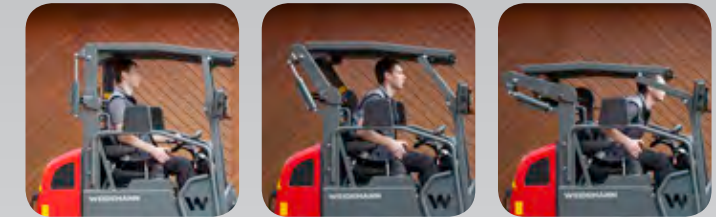
demo park
innovation award 2015
Germany



Fold-down operator's canopy eps (Easy Protection System).
Optionally, all Weidemann Hoftracs® (except for 1240LP and 1880) are outfitted with the fold-down operator's canopy eps. This also meets the current European machine directive (2006/42/EC) for roll-over protective structure and FOPS protection. With a few hand movements, the eps can be manually prepared for a low clearance height.



Hydraulically lowerable operator's canopy epsPlus (Easy Protection System Plus).
The optionally available epsPlus is a hydraulically lowerable operator's canopy, which the operator can operate from his seat. It solves the problem of low clearance heights and considerably facilitates work on the job. The epsPlus is a convenient solution with tremendous time savings and high safety standards – available for 1160, 1160 eHoftrac® and 1260.



Awarded with:



EuroTier
Innovation award 2014,
silver Germany

Driver assistance system vls (Vertical Lift System).

The vls (Vertical Lift System) is installed in all Weidemann telehandlers. It makes a fluid working principle possible and, through a partially automated telescoping movement, supports the work in a complex operating environment. Due to the nearly vertical lifting or lowering movement, the stability of the machine is improved. The operator has the following vls modes available:
1 Bucket mode (e.g. loading work with bulk material),
2 Stacking mode (e.g. stacking round bales) and
3 Manual mode (e.g. for pushing work, only available with the T6027).

When lifting, the telescopic arm automatically extends in the upper range only if the stacking mode is switched on. When lowering, the telescopic arm automatically retracts in the upper range if the stacking mode and bucket mode are switched on. This ensures that the machine does not suddenly come into the overload range and tip forward.

The fluid working principle, the avoidance of a reduced lowering speed for safety reasons and the easier machine operation increase the machine's handling capacity. Experienced operators can work even faster and safer with the vls. Inexperienced operators receive valuable support for lifting and loading work.



The vls has received multiple international awards:

Agritechnica
innovation award 2011, silver
Germany



eima
innovation award 2012
Italy



Equitana
innovation award 2013
Germany



These options make you the expert.

Ergonomic working through professional tool use.

Not all options are available with every machine or in every country – you can find more detailed information from your local Weidemann distributor.

This brochure is for general product information. If you are interested, one of our distributors would be happy to send you an offer. The descriptions, illustrations and technical data are not binding and do not necessarily represent the standard design. We reserve the right to make changes. Despite greatest care and diligence applied, we cannot rule out deviations from the images or measures, errors in calculation, misprints or omissions in this project. We therefore assume no liability for the accuracy and completeness of our information in this brochure.



Separate oil coolers:
Additional oil cooler for applications with attachments that require a high hydraulic power density (e.g. a mulcher).

- Advantages:**
- The hydraulic oil is cooled better.
 - Longer application times are possible.



A separate 4th control circuit that is independently and individually operated (front and rear possible):
The vehicle is equipped with a dual-acting auxiliary control circuit.

- Advantage:**
- Allows the application of hydraulically activated attachments with several connections and functions (e.g. a snow blower).



Electrical connections (front and rear):
Connections for electrically operated attachments or attachments with additional functions (such as sweeping machine with water spraying device).

- Advantages:**
- This makes the operation of electrically driven attachments possible.
 - This makes it possible to switch-over from attachments with hydraulically activated functions.



Air-suspended, heated comfort seat:
The ergonomically favourable position can be set for any driver type and size.

- Advantages:**
- Driver fatigue only occurs later after prolonged application.
 - Long-term investment in the operator's health.



Rapid action couplings (Faster):
A coupling where you can connect several hydraulic hoses with one motion, even under pressure.

- Advantage:**
- Significant time savings when coupling.



High Flow:
The vehicle is equipped with High Flow volume flow increase and two control lines.

- Advantage:**
- Allows the driving of front attachments with separate oil engine drives, which require an increased demand for hydraulic power (e.g. for snow blower).



Lifting arm damping from 13-series:
The lifting arm damping suppression absorbs and cushions oscillations from the loader unit and load during transport.

- Advantages:**
- Improved driving comfort.
 - Increased driving safety.
 - Higher travel speeds are possible.
 - Less machine stress.



Air-conditioning system:
The vehicle is equipped with an air-conditioning system.

- Advantages:**
- Comfortable working at high outdoor temperatures.
 - Increases cleanliness and the well-being in the cab by filtering the indoor air.
 - No fogged up windows during winter use.



Proportional control:
High performance hydraulics with proportional control. With this option, the 3rd control circuit and the telescopic function are proportionally controlled.

- Advantages:**
- Sensitive operation of the 3rd control circuit and the telescopic function.
 - Shortening of the loading times and therefore an increased economic efficiency.



Engine pre-heater:
Cold-start help for temperatures below -5°C. Heating elements heat the coolant according to the principle of gravity (warm liquid rises, cold liquid falls).

- Advantage:**
- Easy starting of the engine at low outdoor temperatures.



Speed increased to 30 or 40 km/h:
The vehicle is equipped with a speed of 30 or 40 km/h.

- Advantages:**
- Faster transposing of the machine is possible.
 - Time savings and increased economic efficiency.



Hand-inching:
With the low-speed control, very slow travel speeds can be achieved at a constant engine speed.

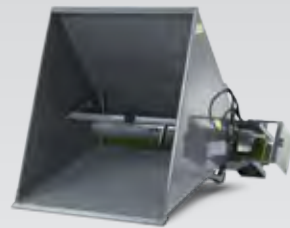
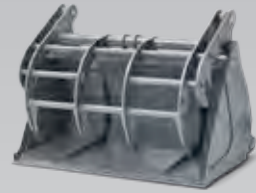
- Advantage:**
- When using attachments that, for example, are operated with a constant high rpm, but simultaneously with a very low travel speed (e.g. a sweeping machine), you do not have to constantly operate the foot inching pedal.

The optimal tool for every task.

The perfect interplay of man, machine and tool.

Only the right attachment makes our machines into true problem solvers for your respective work task. The Weidemann attachments were designed specifically for this purpose.

With the richly varied and well-thought-out product range, our machines become highly functional multi-tools that meet any application. You will find a selection of common attachments here:



You will find more attachments at: www.weidemann.de

Efficiently change attachments.



Thanks to the hydraulic quick-change system, attachments can be readily exchanged. Your Weidemann machine is therefore always ready for use. This increases productivity and profitability.

Weidemann supports.

The right solution for every machine size.

The Hoftrac® and the 30-series wheel loader support are the same in setup, but the roll-in angle and pitch are different due to the different kinematics. The 40/50-series wheel loader support is built even more sturdily, has reinforced bolts and is wider than the

Hoftrac® or 30-series wheel loader support. If desired, of course additional receptacles (e.g. Euro, SkidSteer, SMS, etc.) or adapter plates are available.

The right holding fixture for every machine:

Hoftrac® support

1140 / 1140 Basic Line	2070LPT
1160	2080T
1160 eHoftrac®	3080LPT
1240LP	3080T
1260	4080LPT
1280	4080T
1350 CC	5080T
1380	T4108
1880	T4512
2070LP	T5522
2080	T6027



30-series wheel loader support

3080LP
3080



40/50-series wheel loader support

4080LP
4080
5080



The right tyres for your application area.

Tread.



EM tread
Thanks to the almost parallel lamellas, the EM tread is particularly well suited for loose ground such as sand, soil or gravel. Thanks to the high thrust transmission, this tyre has a large footprint and runs very smoothly on the road.



AS tread
The tapered lamellas provide for safe driving, especially on greasy terrain.



SureTrax tread
The SureTrax tread impresses with a large contact surface as well as a high lift capacity. It is ideal for solid and other hard surfaces.



RP tread
Due to the large contact surface, the ground is traversed gently. This makes the RP tread particularly suitable for application on lawns.

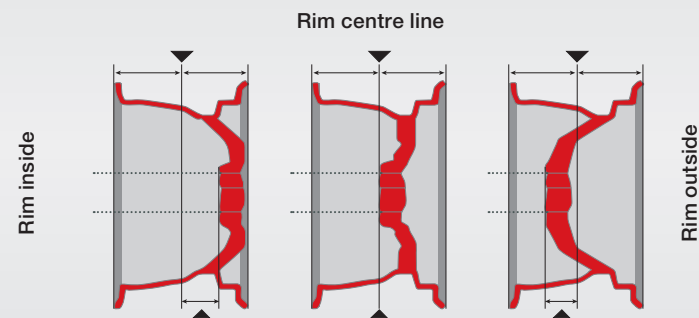


MPT tread
The MPT tread offers the perfect combination of good traction on uneven ground conditions and fast road crossings.



Multi-use
The multi-use tread was specially designed for year-round use and various climate conditions. In summer, it provides good traction on loose surfaces. In winter, it offers stability on snow and slippery driving surfaces.

Offset.



Explanation of the tyre designation.

405/70-18 EM ET0 Tyre width in mm
405/70-18 EM ET0 Cross-section ratio of height and width of the tyre in % (edge height)
405/70-18 EM ET0 Rim diameter in inches
405/70-18 EM ET0 Tyre tread
405/70-18 EM ET0 Rim offset

15.5/55-18 EM ET0 Tyre width in inches
15.5/55-18 EM ET0 Cross-section ratio of height and width of the tyre in % (edge height)
15.5/55-18 EM ET0 Rim diameter in inches
15.5/55-18 EM ET0 Tyre tread
15.5/55-18 EM ET0 Rim offset

31 x 15.5-15 EM ET-37 Outer diameter of tyres in inches
31 x 15.5-15 EM ET-37 Tyre width in inches
31 x 15.5-15 EM ET-37 Rim diameter in inches
31 x 15.5-15 EM ET-37 Tyre tread
31 x 15.5-15 EM ET-37 Rim offset

10x16.5 EM ET40 Tyre width in inches
10x16.5 EM ET40 Rim diameter in inches
10x16.5 EM ET40 Tyre tread
10x16.5 EM ET40 Rim offset





WEIDEMANN

designed for work

The Weidemann product range.



The multifunctional Hoftracs®.

Powerful helper for every application. Our innovation: the fully electric 1160 eHoftrac®.



The powerful wheel loader.

Optionally available with load arm or telescopic arm.



The compact telehandler.

Aim high with optimal stability.



Attachments and tyres.

Your Weidemann machine becomes a multi-tool! The optimal attachment and the right tyres for every task.



WM.EMEA.10266.V01.EN/08/2017

Weidemann GmbH

Mühlhäuser Weg 45-49
34519 Diemelsee-Flechtendorf
Germany
Tel. +49(0)5633 609-0
Fax +49(0)5633 609-666
info@weidemann.de
www.weidemann.de